



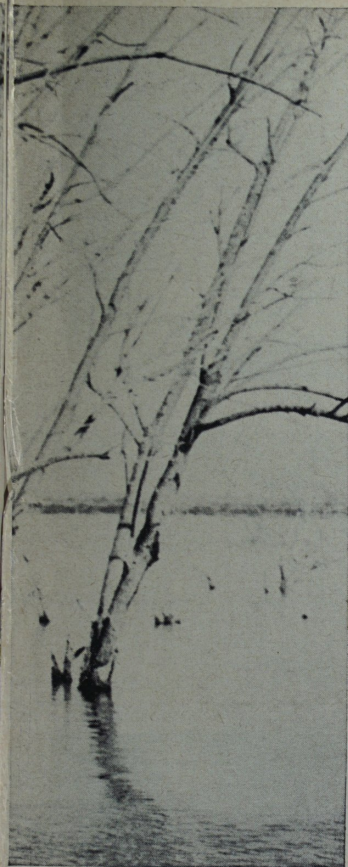
MAKE A "THROWAWAY" DUCK-

Bill of Materials

1 (4'x 8') sheet 1/4" Masonite or plywood	\$3.20
25 lineal feet 1" x 12" shelving pine	3.75
1/2 pound 5-penny cement-coated nails	.25
20 2" wood screws	.60
8 3/4" wood screws	.15
2 4" angle braces	.30
8 feet of 1/2" Manila	.48
1/2 pint liquid neoprene	.75
8 square feet of fiber glass	1.00
1 pint resin	1.25
1 pint bottom sealer: (If you intend throwing it away each season, then use old house paint, spar varnish, or what have you.)	.75

TOTAL \$12.48

No thing of beauty is
this little bucket—she's
all practicality. But
you will never beat her
price tag, and she's
tops as a one-man duck
or pond fishing boat



BOAT

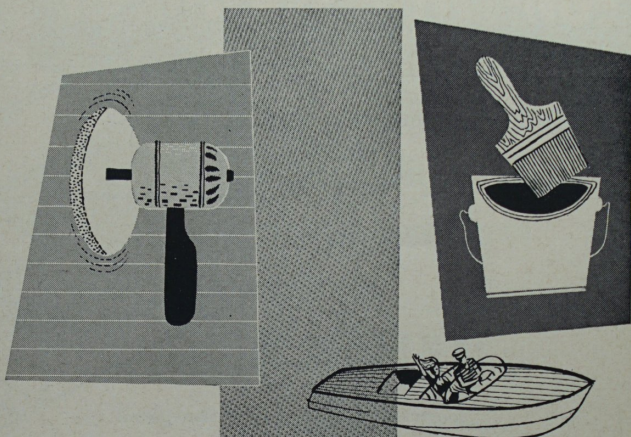
BY V. LEE OERTLE

LIKE TO HAVE a small duckboat that will fit in your station wagon or pickup truck, will float in bare inches of water, weigh less than 50 pounds—and can be built cheap enough to throw away at the end of the season?

It is so simple to construct that the only tools needed are a hammer, saw, wood rasp, two wood clamps and a screw driver. The entire project can be completed in less than four hours' working time.

By no stretch of the imagination could this little hunter's friend be

simple A B C's for care-free boating!



Sure, it's easy as a b c to have your boat for pleasure only, season after season. Merely take the three easy steps for applying Trevarno Glass Boat Fabrics. This amazing material will permanently provide your wooden boat with hull and decks completely impervious to water, marine organisms and rot, as well as make it stronger and faster! Here's how easy it is: A - clean and sand hull or deck. Paint on resin-catalyst; B - smooth on Trevarno Glass Fabric; C - paint on last coat of resin. That's all there is to it! And with special Volan AC finish, Trevarno fabrics are the easiest of all to apply and shape to boat contours.

Write your nearest Jobber for data

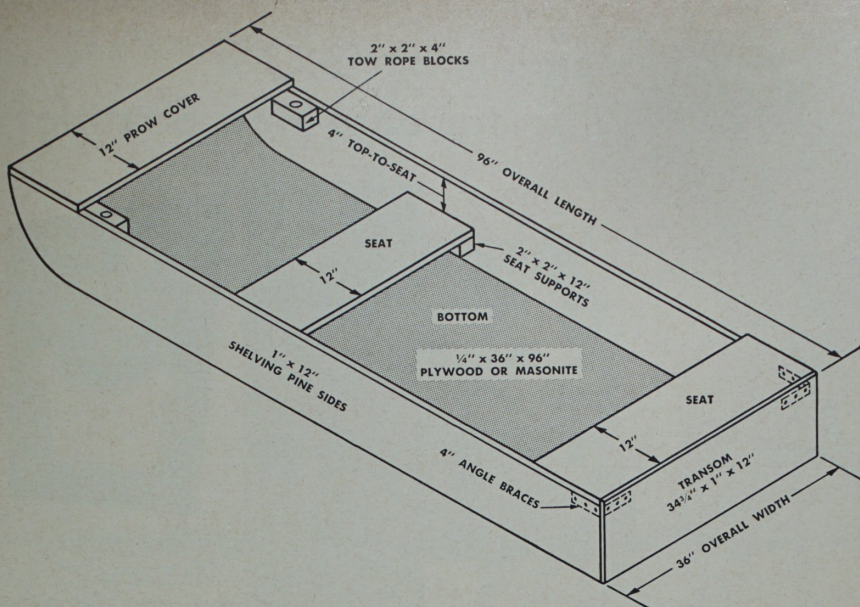
CALIFORNIA—C. J. Hendry Co., 27 Main Street, San Francisco; C. J. Hendry Co., 2607 Byron Street, San Diego; C. J. Hendry Co., 111 Front Street, San Pedro
FLORIDA—B & B Distributing Co. of Florida Ltd., 3707 N.W. 49th Street, Miami
HAWAII—Craig & Co., Ltd., 338 Ward Avenue, Honolulu
IDAH0—Idaho Chemical Co., P. O. Box 2641, Boise
OKLAHOMA—Plastic Engineering Co. of Tulsa, 3128 E. Admiral Place, Tulsa
OREGON—The Beebe Co., 510 S.W. First Avenue, Portland; Oregon Marine Supply, 235 S.W. First Avenue, Portland
TENNESSEE—Mercury Outboard Supply Co., Inc., 2731 Union Avenue, Ext., Memphis
TEXAS—Plas-Tex Co., Inc., 2813 Crockett Street, Fort Worth, Texas
UTAH—Wilson Transport Supply, 665 So. State, Salt Lake City
WASHINGTON—Fiberlay Inc., 1158 Fairview Avenue, Seattle

Trevarno
GLASS FABRICS

COAST MANUFACTURING & SUPPLY COMPANY

Livermore, California • Seguin, Texas

3999

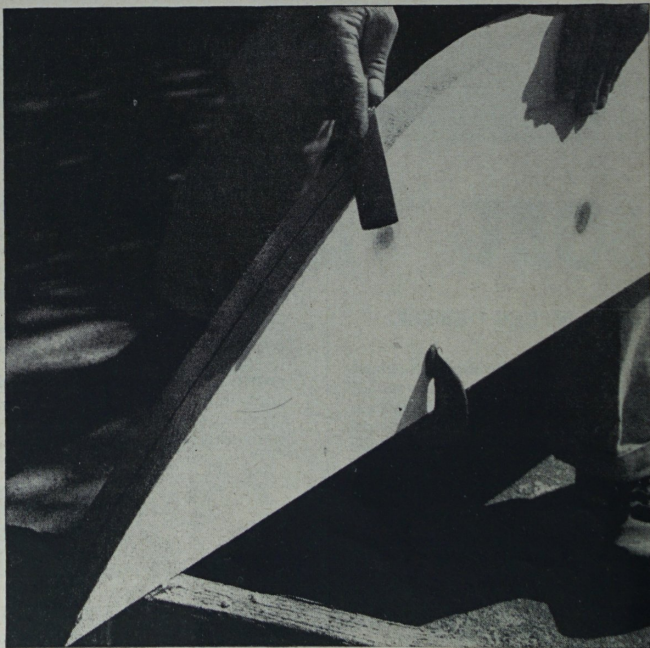


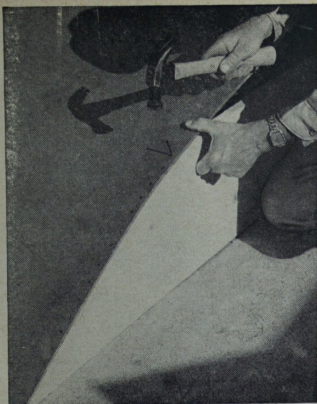
Design couldn't be simpler or easier to build. Standard lumber sizes and low-cost materials keep price tag down. First step (right) is to cut bow curve. Clamp planks together, saw.

used on rough waters, on the high seas, or with a twin-lung kicker on the back. But with a beefed-up transom and knee brace, it's my opinion that a 1 1/2 hp or 2 hp outboard, handled by an intelligent operator, would be safe.

I've paddled literally miles in this tough little go-getter, bumped over logs, rocks, dragged it across sand bars and up on gravelly beaches, with no worse damage to the hull than ugly scratches. (My boat has a fiber-glass bottom, explained later.)

At the end of the season, do as I do: Haul it out to your favorite offshore hunting spot and make a permanent blind out of it by nailing slats and camouflage to it. A couple loads of buckshot in the bottom will make sure that no one is tempted to drag it away. Next year, build another—after all, it's only \$12.48. Pro-rate this out for an average season of four trips, and you spend about \$3 per week end used. Plus the fact that you know





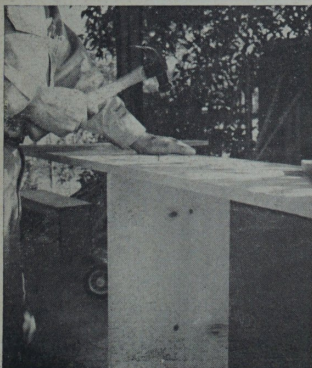
Then the Masonite (or light waterproof plywood) bottom 3' x 8' is nailed into the side planks with 5-penny nails every 1½". Don't countersink nails, let heads lie flush.

in advance you'll have a boat for your own use.

This boat is also very handy for getting into good fishing waters, such as off-river sloughs and isolated, landlocked ponds. It's light enough to portage, has shallow draft for almost any water inhabited by catchable fish, and is a pushover to paddle.

If you'd like to keep it a few seasons after seeing how versatile it is, spend an additional \$5.98 on enough fiber glass and resin to cover the entire bottom of the hull. (The outer seams have already been covered, paid for in the initial cost estimate.) If you follow this latter

On goes the transom. Nails through the side planks will hold it. You are going to brace it further with a small deck. Trim off any extension of side planks so stern is flush.



MOTOR BOAT HARDWARE & FITTINGS

... for your new boat,
remodeling,
or replacement

SPECIFY AND BUY

KAINER

**Designed and
manufactured by
Kainer and Company
long established
and pioneers
in this field.**



Drum
Steerer



Windshield
Brackets



Streamline
Cleat



Throttle
Control



Flagpole &
Stern Lights

Sealed Beam
Spot Light



**OUTBOARD AND
SMALL MOTOR BOAT
EQUIPMENT • CATALOG 100**

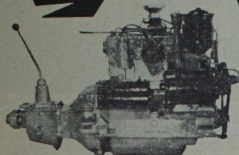
WRITE FOR THIS BOOKLET TODAY— **IT'S FREE!**

KAINER & CO.

761 W. LEXINGTON • CHICAGO, ILLINOIS

For Your Boat... Low Cost INBOARD MARINE ENGINES

**JEEP 61 HP
MARINE MOTOR**

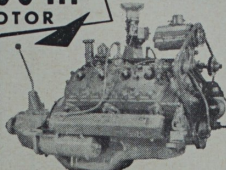


\$395.00 61 HP JEEP marine conversion by Stokes—the ideal power plant for many types of small craft. Offers plenty of ready and dependable power, ease of operation, real economy and the advantages of light weight! Brand new conversion parts, starter, generator, reverse gear, and genuine factory rebuilt block—complete, ready for fast, easy installation. For fresh or salt water use.

SMOOTH ★ POWERFUL ★ DEPENDABLE

**FORD 100 HP
MARINE MOTOR**

\$450.00



- Want real speed and power — dependable service — and operating economy? Then here's the inboard for you — the Stokes 100 HP FORD marine conversion. The last word in engineering efficiency, peak performance. Comes complete with genuine factory rebuilt block, starter, generator, reverse gear. Built for salt or fresh water, quality throughout—at a bargain price!

Big Savings...

Amazing low prices on big variety of marine conversions: Chevrolet V-8, Plymouth V-8, Dodge V-8, Ford 6, Studebaker Champion, Olds 88, DeSoto Fire-Dome, Chrysler V-8s, Willys 6, and many others.

Send for FREE Catalog Now!

STOKES MARINE SUPPLY CO.
Dept. SA-88, Coldwater, Michigan—U.S.A.
Please send me your New FREE 1958 Catalog and complete information on all available motors.

NAME _____
ADDRESS _____
CITY _____ STATE _____

ALL KINDS OF SUPPLIES—

Whatever your marine needs, Stokes can supply you—and SAVE you money! Big selection of new, used, and rebuilt engines, gasoline and diesel, 2 to 550 HP. Stock list Free! Big assortment of Conversion Kits, all complete! Plus marine supplies and equipment of all kinds, at low prices. Send for Big FREE Catalog.

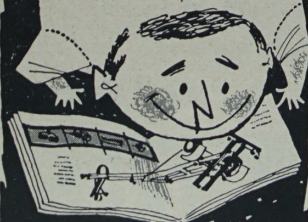
**STOKES MARINE SUPPLY CO.
COLDWATER, MICHIGAN—U.S.A.**

look for the
BIG DIFFERENCE
in boat trailers

MASTERCRAFT BOAT TRAILERS for 1958... the **BIG DIFFERENCE** in design, construction, performance... and many more new features. Everything you want in a boat trailer here now in MASTERCRAFT — for over seven years the world's most popular boat trailers.

Want all the facts? Send for complete, 16-page, full-color, illustrated catalog today. Free.

Write Dept. 9



MASTERCRAFT trailers, inc.
Middlefield Street Middletown, Conn.

Next time . . . use



for building or repairing boats



IT STAYS STUCK!

- Waterproof
- Flexible
- Quick-drying
- Oil-resistant
- Extra strong

IDEAL FOR CANVAS

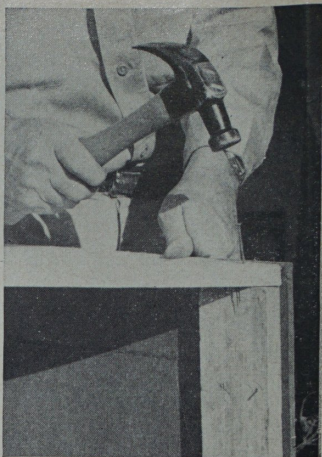


For quick, long-lasting repairs on canoes, tents, rods, etc., do it with AMBROID! Mends "most everything" — wood, leather, canvas, metal, plastic. Get AMBROID TODAY; keep it handy!

Quart cans \$3.35 Pints \$1.75
4 oz. tubes 60¢ 1 1/4 oz. tubes 30¢

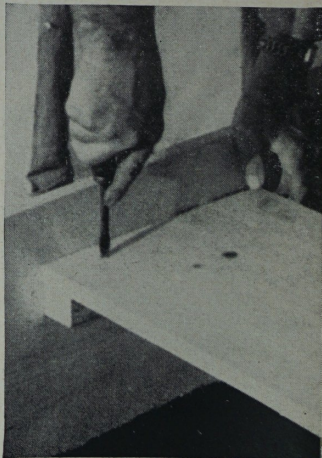
At leading sporting goods, hobby and hardware stores or write:

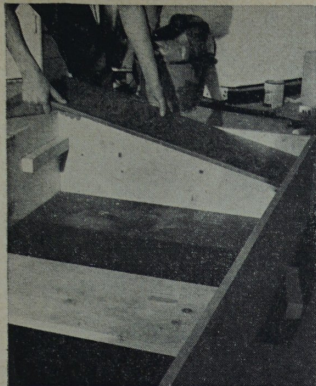
AMBROID COMPANY
Rte. 3 E. Weymouth, Mass.



To brace the forward section of the boat, nail a piece of scrap along the top of your bottom of Masonite. After this piece is secured to the sides, nail through the bottom and clinch the nails behind brace. This reinforces a potential weak spot in the hull.

Four blocks, screwed into place on the side planks, serve as supports for the middle and after seat. Make the seats as wide as you want; these are 12". Screws hold them in place. Seats give lateral strength to your boat; see they're fastened securely.





15-ft. Sports Cruiser—No. 210—\$1.50



10-ft. Hydroplane—No. 216—\$1.50



12-ft. Multipurpose Boat—No. 113—\$1.00

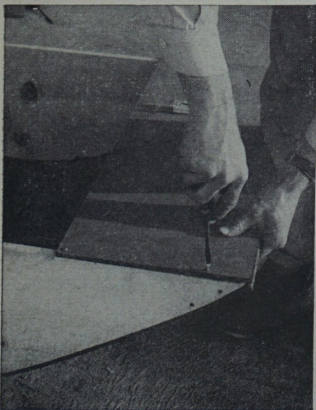
As the drawing shows, the after seat is tied in flush with the transom. This adds further support to both members, stiffens up the boat. Front seat is slightly forward of amidships.

advice the boat will last several seasons with proper care—long enough to fill the bottom with flopping bass and a limit of greenheads!

The builder can save even on these prices if he shops around for plywood and pine; by using odd-lot screws from his tool chest; by using old rope; by using leftover house paint for hull. Remember—it's a "Throwaway" boat!

Those wishing to keep the boat as a fishing dinghy should purchase 2½ yards of fiber-glass cloth and 1 quart resin and apply to bottom as protection against rocks. This will cost an additional \$5.98, for an adjusted total of \$18.46.

From your 4'x8' sheet of plywood or Masonite, you have a 12" strip. Secure this with ¾" screws over the bow. This strengthens your boat forward; keeps water from splashing in.



Build Your Boat

IT'S EASY AND FUN WITH
ANY ONE OF THESE 25 PRE-TESTED,
STEP-BY-STEP ENLARGED PLANS

Think how thrilled you'll be when your own boat takes her maiden plunge! You can build the "boat of your dreams" right now from any of 25 easy-to-read plans. Every model has already been built and thoroughly tested. Every boat is skillfully engineered for fast assembly, specially designed for ease of construction, safety, strength, and seaworthiness. Plans list all necessary materials. In most cases no special tools are needed. Offer below tells you how you save money by ordering more plans—rush coupon while supply of all plans is available.

3. ALL PURPOSE 12-ft. combination, fishing, rowing and runabout. 36" deck forward. Weighs 120 lbs. Takes up to 10 hp. motors—speeds up to 35 mph. Simple plywood construction with canvas covering. Semi-Vee bottom. Low cost. Fills every smaller craft need. **\$1.00**

13. ZIPP 13-ft. outboard hydroplane single cockpit design. Seats 2. Takes 10-50 hp. motors—fast and sporty. Has been used as a racing craft. Adapted especially to plywood construction. **\$3.00**

14. SEA GAL 15-ft. Here's a strong, stable, general purpose outboard runabout adapted for use on open rough waters. Seats 4 comfortably. Convex and Vee bottom plywood construction. With 14 hp. motor will do 25 mph. **\$1.00**

24. RANGER 17-ft. outboard cruiser. Seats 4 or sleeps 2. Takes 25 to 50 hp. motors. High speed vee bottom design. All accommodations included. Plywood const. Strong, stable, seaworthy. **\$1.00**

27. METEOR 12½-ft. fast, sporty outboard hydroplane with convex bottom, non-tripping chines. Speeds up to 35 mph. Plywood construction. **\$1.00**

30. FALCON 14-ft.—18 sq. ft. sailboat of centerboard design. Faster than Snipe and Comet designs and sticks with 15 footers. Plywood construction. Easy to build. Seats 4. Sail plans included. **\$1.00**

31. WHIZZ 21-ft. high speed cruiser designed for use with 40 to 100 hp. in-board motors with long cruise accommodations for 2. Plywood construction over oak frames. Handles easily at high speed. Plans include cabin design. **\$1.00**

32. BUZZ 11-ft. car top outboard hydroplane designed for use with 10 to 10 hp. motors. Seats 4 persons. Weighs only 135 lbs. Convex bottom. Plywood planking over stressed frame. **\$1.00**

36. CHUM 15½-ft. Speedy inboard runabout designed for use with a converted Jeep engine or any other 25-100 hp. converted car engine. You can use either a double or single cockpit. Seats 4 people. Sturdy plywood construction. **\$1.00**

75. KINGFISHER 9-ft. Pram. Ideal as a car top boat. Seats 3. Takes 1 to 3 hp. motors. Weighs only 90 lbs. Simple plywood construction over frame. **\$1.00**

78. SPORTSMAN 18-ft. cabin cruiser for overnight or weekend trips. Designed for inboards of 15 to 30 hp. Speeds up to 40 mph. with 4 persons. Weighs 1700 lbs., stable and seaworthy. **\$1.00**

104. BUDDY 13-ft. utility boat. You can row, sail or power this boat with motors up to 12 hp. Seats 4. Smart semi-vee bottom design. Weighs only 130 lbs. Easy to build, inexpensive const. **\$1.00**

112. VICTORY Designed as a 12-14 or 16-ft. 2-cockpit runabout of smart design that combines utility with speed and comfort. Speeds up to 30 mph. Seats 4 or more. Plywood construction. **\$1.00**

113. JAZZ BABY 12-ft. semi-vee bottom multipurpose boat. Snappy design takes most heavy outboard motors. Rows easily. Seats 4. Weighs 150 lbs. Simple plywood construction. **\$1.00**

138. SEA SCOUT 14½-ft. speed inboard runabout with single cockpit that seats 3 comfortably. Takes engines up to 65 hp. Plywood construction. **\$1.00**

150. NANCY JANE 12-ft. all-purpose inboard runabout of durable cockpit design with or without cabin. Takes engines up to 60 hp. Single seat. Plywood construction over oak frame. **\$1.00**

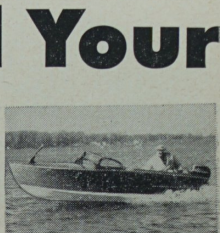
155. MUSTANG 12 or 14-ft. high speed runabout. Seats 4. Ideal for use without boards up to 25 hp. Roomy double cockpit. Plywood over stressed frame. **\$1.00**

176. SKEETER 8-ft. lightning fast, blunt nosed racing hydroplane. Plywood and canvas construction make it light and easy to handle. Carry top car. **\$1.00**

165. YELLOW JACKET 8-ft. Class A racing hydroplane for use with 7½ hp. motor. Original has nearly broken records several times. Simple plywood construction with fabric deck. **\$1.00**

174. BLITZEN 11-ft. speedy outboard runabout for Class B racing. Has been clocked at 47 mph. using a 25 hp. outboard engine. Two hull styles from same basic design are given—one for racing and one for general utility. Seating capacity: 4 persons. Plywood construction. Lends itself to quantity production. Also you want to build some extra to sell at a profit or rent them. **\$1.00**

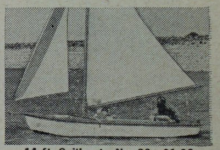
175. EAGER EYE 18" Outboard Cabin Cruiser for racing and sports cruises. Carries 4 or sleeps 2. Plywood construction with concealed motor in well. V-concave bottom and 6" beam at widest point. Hull: 600 lbs. Depth 40" forward; 28" aft. Top Speed 30 mph. with Evinrude, Johnson or Mercury motors. Low in cost to build—fun to run. Easy to transport on a trailer. **\$1.50**



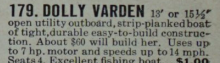
14-ft. Sailboat—No. 30—\$1.00



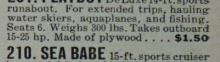
17.9-ft. Dolly Yarden 18" or 15½" open utility outboard, strip-planked boat of tight, durable easy-to-build construction. About \$60 bill boat. Uses up to 7 hp. motor and speeds up to 14 mph. Seats 4. Excellent fishing boat. **\$1.00**



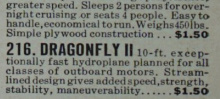
201. Playboy DeLuxe 14-ft. sports runabout. For extended trips, hauling water skiers, aquaplanes, and fishing. Seats 6. Weighs 300 lbs. Takes outboard 18-25 hp. Made of plywood. **\$1.50**



210. SEA BABE 15-ft. sports cruiser has special designed hull that practically eliminates power-wasting spray. Hence, greater speed. Sleeps 2 persons for overnight cruising or seats 4 people. Easy to handle, economical to run. Weighs 400 lbs. Simple plywood construction. **\$1.50**



216. DRAGONFLY II 10-ft. exceptionally fast hydroplane planned for all classes of outboard motors. Streamlined design gives added speed, strength, stability, maneuverability. **\$1.50**



216. DRAGONFLY II 10-ft. exceptionally fast hydroplane planned for all classes of outboard motors. Streamlined design gives added speed, strength, stability, maneuverability. **\$1.50**

SPECIAL OFFER!

... SAVE MONEY!

When you order 2 or more plans, you may deduct 50¢ per plan from the price listed above. If your order is for 2 plans deduct 50¢; 3 plans 75¢; 4 plans \$1.00, etc. Order several today and save. Use handy coupon below. Satisfaction guaranteed.

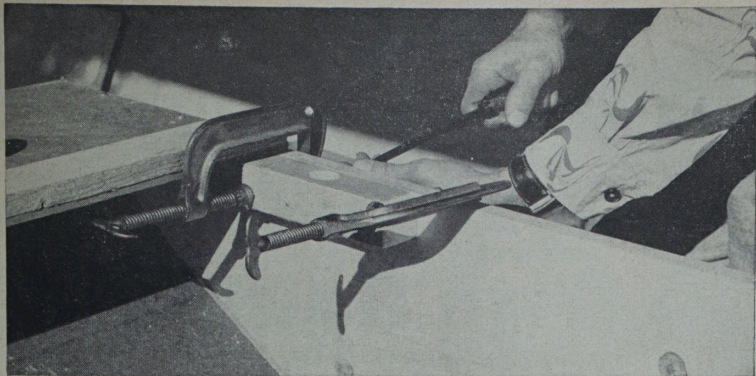
SCIENCE AND MECHANICS, Dept. 181
450 E. Ohio St., Chicago 11, Ill.

Enclosed is \$_____ for which please send me the Boat plans enclosed below.

3 13 14 24 27 30 31 32 36 75 8
104 112 113 138 150 155 157 165 174 179
☐ 175...\$1.50 ☐ 201...\$1.50 ☐ 210...\$1.50 ☐ 216...\$1.50

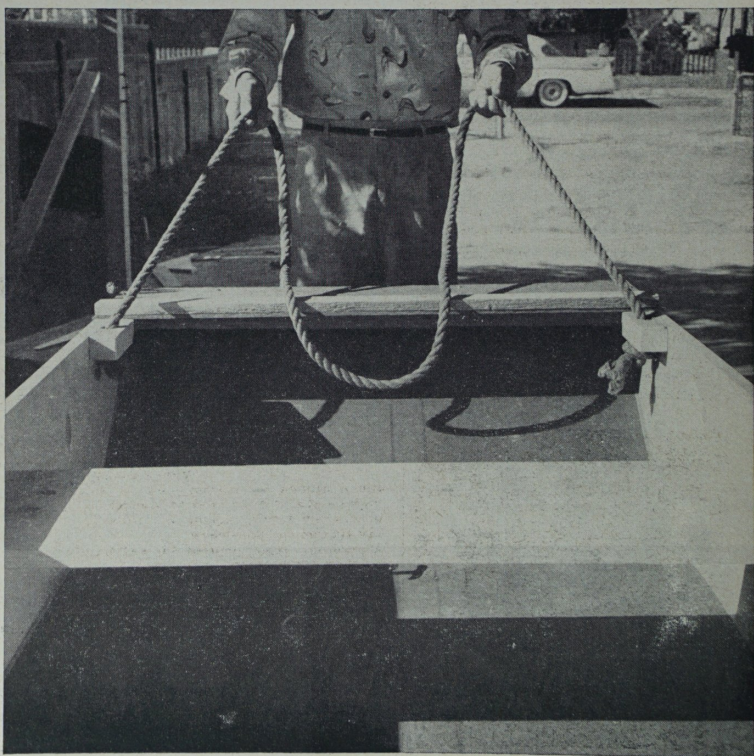
NAME _____
ADDRESS _____
CITY, ZONE & STATE _____

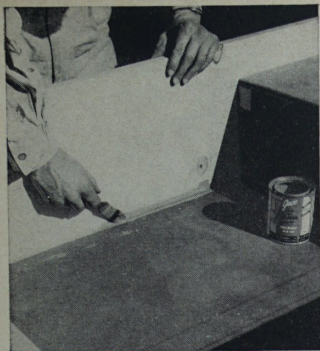
(Sorry, no C.O.D.'s or stamps. Satisfaction guaranteed or money refunded.)



You'll need a tow rope, anchor rope, lifting line. Blocks with a hole bored through do the job nicely, never rust or corrode. Clamps hold the block in place while you drive screws. Make them long to get good holding power. You're almost finished now.

Another duck- and fish-killer nears the end of the production line. Before you paint, secure the transom further with L angle braces over the seat (see drawing). You'll never set sail for Tahiti in this boat, but it will take you far enough to get a few limits.



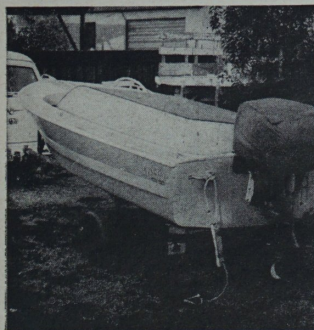


Two coats of liquid neoprene along the seams make the boat watertight. Let first coat dry before applying second. If you want a more permanent boat, put a fiber-glass coat on hull,



Before you paint, use either glass strips on seams like this or cover the whole bottom to give added strength. Sand, apply resin, lay cloth, apply resin again, and the job's done.

Boat fits nicely in larger outboard or in the back of a station wagon. It floats in inches of water and offers a stable shooting or fishing platform. You can't beat it for the money.



NEW WORTHINGTON INVENTION!

NO-VIBE TRANSOM PAD GIVES SMOOTHER QUIETER VIBRATIONLESS OUTBOARDING

NO-VIBE "LITTLE GIANT"
longer — wider — heavier

No. 1131 in black Neoprene rubber only **\$5⁰⁰**
each postpaid

**"REGULAR
"HEAVY DUTY"**
for boats with regular transoms. **GUARANTEED.**
1111—Black Neoprene \$3.95 ppd.
1112—White Neoprene \$4.95 ppd.

**"HEAVY DUTY"
CUT-OUT**
for boats with transom knee bracing. **GUARANTEED.**
1121—Black Neoprene \$3.95 ppd.
1122—White Neoprene \$4.95 ppd.

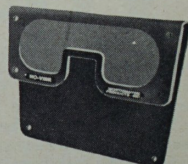
"STANDARD"
for boats with or without transom knee bracing.
1101—Black nat. rubber \$2.95 ppd.
1102—White nat. rubber \$2.95 ppd.



Models for every boat every HP engine from



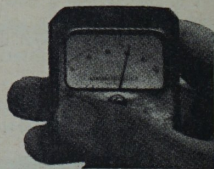
\$295



For All new larger engines 25 HP and up, dimensioned to fit big motors. Dupont Neoprene with Formica. **UNCONDITIONALLY GUARANTEED.**

AUDIOMETER TESTS

show up to 85% reduction of vibration-caused noise!
No-Vibe prolongs life of engine and boat, protects both sides of transom from clamp and engine marks.
All pads, except "Standard," have rigid Formica insert . . . prevents clamps cutting pad and transom.



89% OF ALL BOATS AT N. Y. & CHICAGO BOAT SHOWS HAD NO-VIBE TRANSOM PADS . . . CONCLUSIVE PROOF OF WORTHINGTON'S INDUSTRY

ACCEPTANCE & LEADERSHIP

OTHER GUARANTEED WORTHINGTON PRODUCTS
Write for complete FREE catalog.

RUBBA SNUBBA for mooring lines. from \$2.95 ppd.
No-Vibe CLAMP PADS, attach to engine. per pair 3.00 ppd.
No-Vibe DRIP PAN, regular or cut-out. 3.00 ppd.
SAV-OR Rubber Oar Sleeve. per pair 2.75 ppd.
Waterproof, explosionproof SAF-T-LITE 4.75 ppd.
All-Plastic STEP PLATES from 1.75 ppd.
LITE-HOOK, from \$2.95. With light from 4.50 ppd.
Nautical KEY BUOYS, each, \$1.00 per pair 2.00 ppd.
Ever-Dry SALT & PEPPER BUOYS. per pair 2.00 ppd.

AT YOUR DEALER OR ORDER FROM

WORTHINGTON

PRODUCTS, INC. • MARINE DIVISION
441 Lexington Avenue, New York 17, N. Y.